



# FAIRFIELD DISTRICT ORCHID SOCIETY INC

FOUNDED IN 1964 AS THE LIDCOMBE HOSPITAL ORCHID SOCIETY

July  
ISSUE: 7  
2013

## MONTHLY NEWS LETTER



**MEETING: 7.30 pm**  
**2ND WEDNESDAY**  
**OF THE MONTH.**  
Senior Citizens Hall  
29 Villawood Rd,  
VILLAWOOD.

P.O. BOX 40  
SMITHFIELD WEST  
2164

### OFFICE BEARERS

#### PRESIDENT

John Abrahams  
9726-5397

#### VICE PRESIDENT

Wal Lachmund

#### SECRETARY / TREASURER

Elaine Abrahams  
9726-5397

### COMMITTEE MEMBERS

Don Roberts 97715474  
Tony Brutto  
Maria Brutto  
Mario Attard  
John English  
Stephen Ly

### OTHER CONTACTS

#### EDITOR

Maureen Johns  
97241067 or 0409299980  
orchidsec@gmail.com

#### WEBMASTER

Stephen Ly  
admin@fdos.com.au  
Website, fdos.com.au

## OUR NEXT MEETING

### 14th August

## CHAMPIONSHIP NIGHT.

### Cattleya (over 90mm)

MEMBERS ARE REMINDED  
that no plants are allowed to  
be benched at our Monthly  
Meetings after 7.15 pm



## COMING EVENT

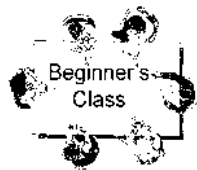
### FDOS Spring Show

3rd September - 7th September

at Stockland Mall Shopping Centre

Polding St, Wetherill Park

Fees \$12.00 per couple (2 people, 1 newsletter); \$10.00 single,  
\$5.00 junior. Annual membership fees are due on January 1.



**7pm PROMPTLY** in meeting room. If late due to entering show plants, please enter QUIETLY and sit at the back. Printouts or examples may be obtained later.

### WE PRIDE OURSELVES ON BEING THE FRIENDLY SOCIETY

Fairfield District Orchid Society Inc. disclaims all responsibility for any loss or damage which may be attributed to the use or misuse of any materials mentioned or any advice given in this news letter.

# CHAMPIONSHIP NIGHTS

AUGUST:  
Cattleya (over 90mm)

SEPTEMBER:  
Australian Native (Except Sarcocylus)

OCTOBER:  
Softcane Dendrobium &  
AUCTION NIGHT

NOVEMBER:  
Sarcocylus

DECEMBER:  
CHRISTMAS PARTY &  
Popular Choice Vote

## Our Market Days at Stockland Mall, Wetherill Park

Will only be held if enough members contact Secretary to let her know if they will be attending and have orchids for sale.  
Ring **9726-5397**

Last Sunday of the month markets at Stockland. We will only be selling Orchids in bloom. Plants to be delivered to the stall by 9.30am on the day, we will be setting up from 8.30am. We plan to sell most items in our store marked up for the public. Members who help for 3 or more hours will only be charged 15% on their plant sales.

## Our Show Dates for 2013

FDOS Spring Show  
3rd September - 7th September  
at Stockland Mall Shopping Centre  
Polding St, Wetherill Park

## Invitation Events

9-11 August National Orchid Extravaganza, Ellerman Park, Round Corner, Dural.

4-6 October Southern Orchid Spectacular Caringbah High School, Cnr Willarong Rd & Taren Point Rd, Caringbah.

September 12-15 Bankstown Show Chester Square Shopping Centre

**Hills District Orchids** hold four Open Days a year. 9.00am until 4.00pm  
Tea & coffee is provided and a BBQ is held from mid-morning to lunch-time.

**Dates to be confirmed**, but usually:

**Winter:** last Sunday in July -

**Spring:** 4th Sunday in September -

**Summer:** first Sunday in December -

As there is no parking at the nursery, please park in either Mary Street or Windermere Avenue. Windsor Road is also on the main bus route between Parramatta and Baulkham Hills/Castle Hill. Westbus Operate from Parramatta railway station. To plan your trip on public transport visit [www.131500.info](http://www.131500.info)

Tinonee Orchid Nursery [www.tinoneeorchids.com](http://www.tinoneeorchids.com) (Ray Clement) and Macquarie Native Orchids (Michael Harrison) attend all of our Open Days.

Guest vendors are also invited with Miriam Ann Orchids (Alan Merriman) attending our Autumn (February) and Spring (September) Open Days, Easy Orchids [www.easyorchids.com](http://www.easyorchids.com) (Murray Shergold) annually attend our Winter (July) Open Days whilst Dark Star Orchids (Hans Schaible)

[www.darkstarorchids.com.au](http://www.darkstarorchids.com.au) is present at our Summer Mark the days on YOUR OWN calendar as these details will not be reprinted in full when more events are submitted

## Interstate Events

7<sup>th</sup> Australasian Native Orchid Society  
Conference & Show.

Held at Strathpine (Queensland,Australia).

\*\*\*\*\*      \*\*\*\*\*      \*\*\*\*\*      \*\*\*\*\*      \*\*\*\*\*

**Public show days 23-25 August 2013**

<http://www.ourshopfront.com/kabi/html/conference.php>

=====  
KU-RING-GAI ORCHID SOCIETY INC.

Fred Clarke of Sunset Valley Orchids in California will be speaking at our next meeting on Monday August 19 at 8.00pm. Fred will be speaking about 'Spotted and Flared Cattleyas'

Visitors from other Societies are most welcome.

Ku-Ring-Gai Orchid Society Meets at:

Lindfield Community Centre  
Corner of Bradfield Road & Moore Avenue  
West Lindfield



=====  
Maureen would appreciate it if arrangements could be made to correct or forward any information about coming events.  
Email to [orchidsec@gmail.com](mailto:orchidsec@gmail.com)

## MINUTES GENERAL MEETING HELD 10<sup>th</sup> July 2013

President, John Abrahams, opened the meeting at 7.34 pm, at the Villawood Senior Citizens Hall.

**VISITORS:** Sophie & Vin Suk

**NEW MEMBERS:** Michael Randy

**APOLOGIES:** Barbara Lachmund, Laura Valli, Ly Family, Ian Hobson & Neil Chiddy

**JUDGES ASSISTANTS FOR August 2013:** Irma Friess & Marga Zanetich

**SUPPER ROSTER FOR August 2013:** Tony Costa & Hermine Wagner

**RAFFLE PRIZES:** Plants from Stock, 4 Samples from Neutrog & Rosa Sessa

**MINUTES OF PREVIOUS MEETING (as published in the bulletin):**

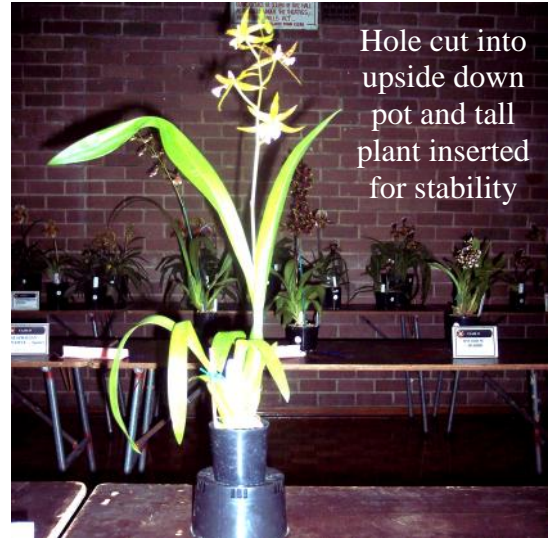
**Moved:** Sandra Crosby                                  **Seconded:** Maureen Higgins                                  **Carried:** Yes

**TREASURER'S REPORT:** Prepared and presented by Elaine Abrahams

**Moved:** Louie Friess                                  **Seconded:** Wal Lachmund                                  **Carried:** Yes

### CORRESPONDENCE IN:

1. Bulletins from affiliated Societies
2. Bank Statement
3. SCU Statement
4. Our Gardens magazine
5. 4 Samples from Neutrog
6. The Orchid Society (Affiliation Fees)
7. Berry District Garden Club Thursday 17<sup>th</sup> – Sunday 20<sup>th</sup> October
8. BAS Statement
9. The Australian Orchid Council Inc. (Membership)
10. Fairfield City Council ( Hall hire)
11. Letter of termination from committee from Ian Lawson
12. Australian Government Business Register ( up date details)
13. Safe a life animal welfare



### CORRESPONDENCE OUT:

1. Bulletins to members & affiliated Societies

**Moved:** Maria Brutto                                  **Seconded:** Scott Sullivan                                  **Carried:** Yes

### GENERAL BUSINESS:

- Stockland market day we will not run due to winter show & will only be run if members show an interest by 21<sup>st</sup> July 2013.
- Winter Show roster is on front table please indicate what hours each day members can be in attendance.
- Parking passes form is on table so last chance to put your name down to receive one.
- Set up at the Forum will start at 5.30pm on Tuesday  
Meet at store for pickup at 5pm
- Members are asked to return all trophies from last year's Spring show so they can be awarded for this year
- Don presented 2 plants from the show bench displaying, 1 unstable in pot on the bench & he suggested that maybe putting the pot & plant into a larger second pot. The other plant had been displayed using a upside down pot with a hole cut into it to stabilize the top heavy plant.
- Members were also reminded to make sure that there benched plants had labels (whether with name of plant or UNKNOWN)

**RAFFLE RESULTS:** Scott Sullivan x 2, Kim Mung x 2, Rosa Sessa, Sarim Chey, Judy Kosaras, Sophie, David Burns, Sandra Crosby, Hermine Wagner & Laurie Higgins

**MEMBERS NUMBER DRAW:** 47 Neil Chiddy Not present    Jackpot \$10.00 in August

Growing Comp Results:	1 <sup>st</sup>	2 <sup>nd</sup>	3 <sup>rd</sup>
	18		

Hermine Wagner

Meeting closed at 8.28 p.m. by John Abrahams.

## **FOR SALE**

Glass House 6mt x 2.5mt \$500.00 o.n.o.

Phone Elaine on 0403 086689

Phone John on 0425 243742

# CHAMPION

**Cym. Pepper Blaze 'Syrah' J & G Davila**

## BENCHING RESULTS — July 2013

### OPEN

**Best Exhibit: Cym. PepperBlaze 'Syrah'**

**J & G Davila**

#### CLASS 1 Standard Cymbidium

- 1: *Cym. Pepper Blaze 'Syrah'* J & G Davila  
2: *Cym. Khan Flame 'Tuscany'* Arthur Smyrniotis  
3: *Cym. Sparkling Pearl 'Perlas'* Louie Friess

#### CLASS 2 Intermediate Cymbidium

- 1: *Cym. Opera Mint 'Darch'* Louie Friess  
2: *Cym. Jessie Blakeston X Lunar Blaze 'Pink Persuasion'* Marga Zanetich  
3: *Cym. Darch Toy X Little Toy* Arthur Smyrniotis

#### CLASS 3 Miniature Cymbidium

- 1: *Cym. Jessie Blakeston X Lunar Blaze 'Pink Persuasion'* Arthur Smyrniotis  
2: *Cym. Willunga 'Regal Princess'* W & B Lachmund  
3: *Cym. Artistic Impression 'Snow Drop'* T Costa & S Crosby

#### CLASS 4 Cattleya – Exhibition

**No Entries**

#### CLASS 5 Cattleya – Novelty

- 1: *Sc. Mini Surprise 'Merrigum'* T Costa & S Crosby  
2: *Sc. Dal's Choice 'Merrigum'* T Costa & S Crosby  
3: *C. Angel Walker 'Enchanto'* Rosa Sessa

#### CLASS 6 Cattleya – Cluster

**No Entries**

#### CLASS 7 Cattleya – Miniature

- 1: *Slc. Precious Jewel 'Ruby' X Pot. Mem. Warren Eggins 'Sunrise'*  
T Costa & S Crosby

#### CLASS 8 Cattleya – Intergeneric

- 1: *Ctna. Brandi 'OC'* Kim Mung

#### CLASS 9 Paphiopedilum Species

- 1: *Paph. wardii* T Costa & S Crosby  
2: *Paph. insigne* var. Harefield Hall T & M Brutto  
3: *Paph. insigne* var. Harefield Hall T & M Brutto

#### CLASS 10 Paphiopedilum – Hybrid

- 1: *Paph. (Jolly Roger X Pacific Magic) X Butler's Effect* - T Costa & S Crosby  
2: *Paph. Nitens* T Costa & S Crosby  
3: *Paph. unknown* T & M Brutto

#### CLASS 11 Paphiopedilum – Complex Hybrid

- 1: *Paph. Maurice Butler 'July' X Coro Thunder 'Ken's Choice'* D Carvey  
2: *Paph. F C Puddle X In Charm 'White'* T Costa & S Crosby  
3: *Paph. Botanhill* W & B Lachmund

#### CLASS 12 Oncidium Hybrid..

- 1: *Onc. Sharry Baby* Rosa Sessa

#### CLASS 13 Oncidinae Intergeneric Hybrid - up to 65 mm

- 1: *Colm. Wildcat 'Ocelot'* T Costa & S Crosby

#### CLASS 13a Oncidinae Intergeneric Hybrid - over 65 mm

- 1: *Dgmra. Olympia 'Jaqui Louise'* W & B Lachmund  
2: *Dgmra. Olympia 'Jaqui Louise'* W & B Lachmund

#### CLASS 14 Australian Native Species (excluding terrestrials) No Entries

#### CLASS 14a Australian Native Terrestrial (species & hybrids)

- 1: *Crbs. aconitiflorus* John English  
2: *Crbs. aconitiflorus* John English

#### CLASS 15 Australian Native Hybrid (excluding terrestrials)

- 1: *Den. Hilda Poxon* Marga Zanetich  
2: *Den. Breathless* John English  
3: *Den. Saigon X Aussie Victory* T Costa & S Crosby

#### CLASS 16 Dendrobium Softcane No Entries

#### CLASS 17 Dendrobium Hardcane Hybrid

- 1: *Den. Kiilani Stripe X Chao Praya 'Gem'* D Carvey  
2: *Den. Dal's Style X Dal's Classic 'Patricia'* T Costa & S Crosby  
3: *Den. Superbiens* T & M Brutto

#### CLASS 18 Standard Species from the Americas

- 1: *Onc. sotoanum* T Costa & S Crosby  
2: *Rest. guttuhta* T Costa & S Crosby  
3: *Onc. onustum* T Costa & S Crosby

#### CLASS 19 Standard Species other than the Americas

- 1: *Coel. Mem. Wm. Micholitz* Kim Mung

#### CLASS 20 Miniature Species

**No Entries**

#### CLASS 21 Vandaceous

- 1: *Sartylis Jannine Banks 'Tinonee'* T Costa & S Crosby

#### CLASS 22 Phalaenopsis - Classic

- 1: *Phal. unknown* T & M Brutto ?

#### CLASS 23 Phalaenopsis - Novelty

**No Entries**

#### CLASS 24 Miscellaneous

- 1: *Masd. Striped Wing* T Costa & S Crosby  
2: *Cirrhopetalum. Elizabeth Ann 'Buckleberry'* Kim Mung

#### CLASS 25 Seedling – Any Genus

- 1: *Cym. Kelly's Winter 'Patricia' X Ginger Wall 'Valencia'*  
Hermine Wagner  
2: *Paph. Goultenianum 'Arcadia' X Mario Palmer 'Dark'*  
T Costa & S Crosby

#### CLASS 26 Fern & Foliage

- 1: *Treasure Fern* Rosa Sessa  
2: *Neoregelia Rien's Pride* Rosa Sessa  
3: *Neoregelia Shell Dance* Rosa Sessa

#### CLASS 27 Floral Art

- 1: *Floral Art* Rosa Sessa

### NOVICE

**Best Exhibit: Den. Burana Jade-Ampai Ruengkasab**

#### CLASS 28 Standard Cymbidium

- 1: *Cym. Golden No.1* Xuan Quang Ho  
2: *Cym. Golden No.1* Ampai Ruengkasab

#### CLASS 29 Intermediate Cymbidium

**No Entries**

#### CLASS 30 Miniature Cymbidium

**No Entries**

#### CLASS 31 Cattleya – 90mm and over

**No Entries**

#### CLASS 32 Cattleya – under 90mm

- 1: *Slc. Kauai Starbright X B. nodosa Nova* Ampai Ruengkasab

#### CLASS 33 Paphiopedilum

**No Entries**

#### CLASS 34 Dendrobium

- 1: *Den. Burana Jade* Ampai Ruengkasab

#### CLASS 35 Australian Native

**No Entries**

#### CLASS 36 Species

- 1: *Laelia anceps* Xuan Quang Ho

#### CLASS 37 Miscellaneous

- 1: *Miltassia. Royal Robe 'Jerry's Pick'* Xuan Quang Ho

#### BENCHING RESULTS - Change of Policy

The committee has instructed me to make no corrections to the results (Spelling, Genus, abbreviations etc.) The following results are as taken from the Benching Result Sheets. These are filled in by copying YOUR plant name labels. If there are errors on YOUR label, there will be errors on the result sheets.

The correct abbreviation for *Paphiopedilum* is *Paph.*

**ANIMAL WELFARE LEAGUE NSW  
FURRY FUN DAY**

**Fund Raising/ Public Awareness/Open Day**

**Sep 7, 2013**

**Kemps Creek Shelter**

**1605 Elizabeth Drive**

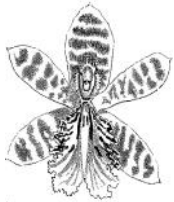
**88993333**

**www.awlnsw.com.au**

Jose Davila with *Cym. Pepper Blaze 'Syrah'*



Ampai Ruengkasab's *Den. Burana Jade-*




**Advertising spaces  
available.  
Your own artwork or  
ours!**

*For only \$20 per year Contact  
Editor to help subsidise our colour pages*

**MORE PHOTOS ON OUR NEW  
WEBSITE  
[fdos.com.au](http://fdos.com.au)**

**HANDY MAN**



**Handy Man**  
*John Abrahams*

52 Buckingham Street  
Canley Heights  
N S W 2166  
Ph: 0425 243 742

For all home and commercial repairs  
and maintenance including yard work

**WALL & FLOOR TILING**



Bathrooms  
Kitchens  
Waterproofing  
Pensioners Welcome

**25 YEARS IN THE BUSINESS**  
**Van Be Tran 0408643619**

# 2012 Winter Show



**GRAND CHAMPION and CHAMPION PAPHIOPEDILUM**

← Paph. Nitens

Diana Carvey



**RESERVE CHAMPION and CHAMPION ANY OTHER**

← M. Copper Angel X ayabacana

To Ha Luong



**CHAMPION CYMBIDIUM** Cym. Willunga Regal 'Princess' →  
W & B Lachmund



**CHAMPION AUSTRALIAN NATIVE** Den. Aussie Parade 'Carrot Splash' ←  
T Costa & S Crosby



**CHAMPION CATTLEYA** ↗ Slc. Fire Magic Magda Kurtyka

**CHAMPION SPECIES** Medicalcar decoratum Greg Knight →



**CHAMPION NOVICE** Cym. One Tree Hill 'Beenak' CC-HCC/OSCOV To Ha Luong

**BEST SPECIMEN ORCHID** Paph. Nitens Arthur Smyrnios

**CHAMPION FLORAL ART** Irma Friess

**ENCOURAGEMENT AWARD** Maria Pusic

## OPEN

**CLASS 1 Standard Cymbidium over 90 mm Pink or Red**  
1: Cym. Lancashire Khan 'Elizabeth' Hermine Wagner  
2: Cym. Darch Joy 'Little Toy' Louie Friess

**CLASS 2 Standard Cymbidium over 90 mm Yellow, Green, White**  
1: Cym. Kelly's Winter 'Patricia' X Ginger Wall 'Valencia' Hermine Wagner  
2: Cym. Valley Mini Cauldron 'Golden Delight' X Conquesso Elafion 'HCC' Hermine Wagner

**CLASS 3 Standard Cymbidium over 90 mm any other colour**

1: Cym. Yowie Pepper 'Ghengis X (Craig Gold 'Margaret' X Lunara Gold)  
Hermine Wagner

2: Cym. Cronulla The Khan  
Otilia Maia

**CLASS 4 Intermediate Cymbidium 60 - 90 mm Pink or Red**

1: Cym. Valley Olympic 'Pink Perfection' Don Roberts

2: Cym. Jessie Blakeston X Lunar Blaze 'Pink Persuasion'  
Marga Zanetich

**CLASS 5 Intermediate Cymbidium 60-90 mm Yellow, Green, White**

1: Cym. Opera Mint 'Darch' Louie Friess

2: Cym. Shoalhaven 'Touch of Class' Louie Friess

**CLASS 6 Intermediate Cymbidium 60 - 90 mm other colour**

1: Cym. Willunga Royal 'Orange Delight' Arthur Smyrnios

2: Cym. Winter Fire 'Splash' Arthur Smyrnios

**CLASS 7 Miniature Cymbidium under 60 mm White**

1: Cym. Cindy Lou '105' Carmen Spiteri

2: Cym. Sarah Jean 'Ice Cascade' Otilia Maia

**CLASS 8 Miniature Cymbidium under 60 mm Pink or Red**

1: Cym. Willunga Regal 'Princess' W & B Lachmund

2: Cym. Mini Beacon 'Red Torch' Carmen Spiteri

**CLASS 9 Miniature Cymbidium under 60 mm Yellow or Green**

1: Cym. Feng Shui Quoc Luong Ly

2: Cym. Sarah Jean 'Show Girl' Otilia Maia

**CLASS 10 Miniature Cymbidium under 60 mm other colour**

1: Cym. Amesbury Coraki X Guy Smith Louie Friess

2: Cym. unknown Laura Valli

**CLASS 11 Paphiopedilum Species**

1: Paphiopedilum wardii T Costa & S Crosby

2: Paphiopedilum liemianum Quoc Luong Ly

**CLASS 12 Paphiopedilum Novelty Hybrid**

1: Paph. Nitens Diana Carvey

2: Paphiopedilum unknown T & M Brutto

**CLASS 13 Paphiopedilum Complex Hybrid**

1: Paph. F C Puddle X In Charm 'White' T Costa & S Crosby

2: Paph. Regal World 'WC' X Opera Star Diana Carvey

**CLASS 14 Cattleya over 90 mm**

1: Sc. Dal's Cherry T Costa & S Crosby

2: Sc. Dal's Choice 'Arcadia' T Costa & S Crosby

**CLASS 15 Cattleya 60 mm - 90 mm**

1: Slc. Fire Magic Magda Kurtyka

2: Sc. Dal's Choice T Costa & S Crosby

**CLASS 16 Cattleya under 60 mm**

1: Slc. Precious Jewel 'Ruby' X Pot. Mem. Warren Eggins  
T Costa & S Crosby

2: Lc. Rojo T & M Brutto

**CLASS 17 Intergeneric Cattleya**

**No Entries**

**CLASS 18 Cluster Cattleya minimum 5 flowers per stem**

1: C. Aurantiaca 'Marigold' Laura Valli

**CLASS 19 Australian Native Species**

1: Den. gracilicaule John English

2: Den. monophyllum John English

**CLASS 20 Australian Native Hybrid**

1: Den. Aussie Parade 'Carrot Splash' T Costa & S Crosby

2: Den. Berry 'ODA' John English

**CLASS 21 Australian Native Terrestrial (Species or Hybrid)**

1: Ptst. concinna Greg Knight

2: Ptst. grandiflora Greg Knight

**CLASS 22 Species from the Americas (over 12 mm)**

1: Enc. polybulbon Don Roberts

2: Neolehmannia porpax Laura Valli

**CLASS 23 Species from countries other than the Americas**

1: Cym. erythraeum 'Paradise' Kim Mung

2: Cym. tracyanum Louie Friess

**CLASS 24 Miniature Species (12 mm and under)**

1: *Mediocalcar decoratum* Greg Knight

2: Epi. imatophyllum 'Fairy Lavender' Laura Valli

**CLASS 25 Oncidium Hybrid**

1: *Onc.* Twinkle 'Fragrant Fantasy' Kim Mung

2: *Onc.* Twinkle 'Fragrant Fantasy' Lydia Hope

**CLASS 26 Oncidium Intergeneric Hybrid - Up to 65mm**

1: *Colm.* Wildcat 'Ocelot' T Costa & S Crosby

2: Howeara Lava Burst Irma Friess

**CLASS 27 Oncidium Intergeneric Hybrid - Over 65mm**

1: Colmanara massai Otilia Maia

2: Wils. Hilda Plum Tree Marga Zanetich

**CLASS 28 Vandaceous Hybrid**

1: Arach. Chorchalood X Rhy. Chorchalood Kim Mung

2: Sartylis Blue Knob 'Park Road' Kim Mung

**CLASS 29 Dendrobium Hardcane Hybrid**

1: Den. Kiilani Stripe X Chao Praya 'Gem' Diana Carvey

2: Den. Enna White X Chao Praya 'Gem' Diana Carvey

**CLASS 30 Dendrobium Softcane Hybrid**

1: Den. Pink Elegance Kim Mung

**CLASS 31 Phalaenopsis (Classic, Over 75mm, Single Colour)**

**No Entries**

**CLASS 32 Phalaenopsis (Novelty, Any Other)**

1: Phal. unknown T & M Brutto

**CLASS 33 Any Other Orchid (Not elsewhere included)**

1: Coelogyne Mem. W. Micholitz Kim Mung

2: Z. Titanic 'Florafest' X Titanic 'June' T Costa & S Crosby

**CLASS 34 Floral Art (In A Boot)**

1: Floral Art "In A Boot" Irma Friess

2: Floral Art "In A Boot" Marga Zanetich

# NOVICE

**CLASS 35 Standard Cymbidium over 90 mm-No Entries**

1: Cym. Khan Flame 'Newcastle' Maria Pusic

2: Cym. unknown Xuan Quang Ho

**CLASS 36 Intermediate Cymbidium 60 - 90 mm**

1: Cym. One Tree Hill 'Beenak' CC-HCC/OSCOV - To Ha Luong

2: Cym. Dolly 'Featherhill' X Pure Sarah 'Starburst' Maria Pusic

**CLASS 37 Miniature Cymbidium under 60 mm**

1: Cym. Sarah Jean 'Vapour' Ampai Ruegengkasab

2: Cym. unknown Xuan Quang Ho

**CLASS 38 Australian Native Species**

**No Entries**

**CLASS 39 Australian Native Hybrid**

1: Den. Zip 'Royal Ensign' X tetragonum To Ha Ly

**CLASS 40 Cattleya (Over 90 mm)**

3: C. unknown Xuan Quang Ho

**CLASS 41 Cattleya (90 mm and under)**

1: Lc. Amethystella var. coerulea To Ha Luong

2: Slc. Kauai Starbright X B. nodosa 'Nova' Ampai Ruegengkasab

**CLASS 42 Paphiopedilum**

4: Paph. Van Ness 'Shapely' To Ha Luong

5: Paph. Nitens To Ha Luong

**CLASS 43 Dendrobium Hardcane Hybrid**

1: Den. Burana Jade Ampai Ruegengkasab

**CLASS 44 Species from the Americas**

**No Entries**

**CLASS 45 Species from other than the Americas**

1: Paph. insigne Ampai Ruegengkasab

2: Dendrochilum Javierii To Ha Luong

**CLASS 46 Any Other Orchid (Not elsewhere included)**

1: M. Copper Angel X ayabacana To Ha Luong

2: Blra. Marfitch 'Howards Dream' AM/AOS Maria Pusic