



FAIRFIELD DISTRICT ORCHID SOCIETY INC

FOUNDED IN 1964 AS THE LIDCOMBE HOSPITAL ORCHID SOCIETY

June
ISSUE: 6
2014

MONTHLY NEWS LETTER



MEETING: 7.30 pm
2ND WEDNESDAY
OF THE MONTH.
Senior Citizens Hall
29 Villawood Rd,
VILLAWOOD.

OUR NEXT MEETING

9 July

CHAMPIONSHIP NIGHT

Cymbidium

P.O. BOX 40
SMITHFIELD WEST
NSW 2164

OFFICE BEARERS

PRESIDENT

John Abrahams
0425243742

VICE PRESIDENT

Wal Lachmund

SECRETARY / TREASURER

Elaine Abrahams
97208964

eamelung@optusnet.com

COMMITTEE MEMBERS

Don Roberts 97715474

Tony Brutto

Maria Brutto

John English

Stephen Ly

OTHER CONTACTS

WEBMASTER &

ASSISTANT TREASURER

Stephen Ly

admin@fdos.com.au

Website, fdos.com.au

ASSISTANT SECRETARY

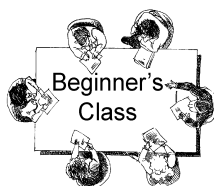
Lesley Appleyard

EDITOR

Maureen Johns

97241067 or 0409299980

orchidsec@gmail.com



7pm PROMPTLY in other room. If late due to entering show plants, please enter QUIETLY and sit at the back. Printouts or examples may be obtained later, at the finish of the class.

WE PRIDE OURSELVES ON BEING THE FRIENDLY SOCIETY

Fairfield District Orchid Society Inc. disclaims all responsibility for any loss or damage which may be attributed to the use or misuse of any materials mentioned or any advice given in this news letter.

CHAMPIONSHIP NIGHTS

JULY:

Cymbidium

AUGUST:

Cattleya (over 90mm)

SEPTEMBER:

Australian Native (Except Sarcochilus)

OCTOBER:

Softcane Dendrobium &

AUCTION NIGHT

NOVEMBER:

Sarcochilus

DECEMBER:

CHRISTMAS PARTY &

Popular Choice Vote

NOVEMBER:

Sarcochilus

DECEMBER:

CHRISTMAS PARTY &

Popular Choice Vote

Hills District Orchids hold four Open Days a year. 9.00am until 4.00pm
Tea & coffee is provided and a BBQ is held from mid-morning to lunch-time.

Dates to be confirmed, but usually:

Winter: last Sunday in July -

Spring: 4th Sunday in September -

Summer: first Sunday in December -

As there is no parking at the nursery, please park in either Mary Street or Windermere Avenue. Windsor Road is also on the main bus route between Parramatta and Baulkham Hills/Castle Hill. Westbus Operate from Parramatta railway station. To plan your trip on public transport visit www.131500.info
Tinonee Orchid Nursery www.tinoneeorchids.com (Ray Clement) and Macquarie Native Orchids (Michael Harrison) attend all of our Open Days.

Guest vendors are also invited with Miriam Ann Orchids (Alan Merriman) attending our Autumn (February) and Spring (September) Open Days, Melanquin Gardens Bromeliads (Gary & Angela Fleming) also attend our Autumn event. Easy Orchids www.easyorchids.com (Murray Shergold) annually attend our Winter (July) Open Days whilst Dark Star Orchids (Hans Schaible) www.darkstarorchids.com.au is present at our Summer (December) Open Day - the last orchid event on the calendar for the year.

Mark the days on YOUR OWN calendar as these details will not be reprinted in full when more events are submitted

Maureen would appreciate it if arrangements could be made to correct or forward any information about coming events.
Email to orchidsec@gmail.com

This newsletter may also be viewed on our
website fdos.com.au

No photos this month as my colour laser
printer is still being repaired

Maureen

Proposed Show Dates for 2014

FDOS Winter Show

23 July - 26 July

(Set Up 5.30 pm Tues 22nd)

FDOS Spring Show

3rd September - 6th September

(Set Up 5.30 pm Tues 3rd)

Invitation Events

17-20 July 2014 - Cumberland Orchid Circle Winter Show, Home Hub, (formally The Hills Supa Centa) in the North Tower at the top end of Showground Rd Castle Hill .

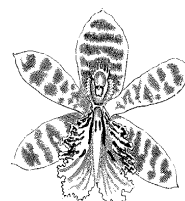
8-10 August 2014 - **Orchid Extravaganza**, Dural Recreational Centre, Round Corner, Dural

15 - 17 August 2014 - **St Ives Orchid Fair**, St Ives Showground

3 - 6 September 2014 - Cumberland Orchid Circle Spring Show, Winston Hills Mall, Winston Hills

3-5 October **Southern Orchid Spectacular** Caringbah High School

18-19 October **Bromeliad Society of Australia Spring Show** First Floor, Burwood RSL, Cnr Shaftesbury Rd and Clifton Ave, BURWOOD



Advertising spaces
available.

Your own artwork or
ours!

For only \$20 per year Contact

Editor to help subsidise our colour pages



Handy Man
John Abrahams

HANDY MAN
52 Buckingham Street
Canley Heights
N S W 2166
Ph: 0425 243 742

For all home and commercial repairs and
maintenance including yard work

MINUTES GENERAL MEETING HELD 11th June 2014

President, John Abrahams, opened the meeting at 7.36pm, at the Villawood Senior Citizens Hall.

VISITORS:

NEW MEMBERS:

APOLOGIES: Barbara Lachmund, Lesley & Gary Appleyard, Charlize Wheller, Carmen Spiteri, Grace Gatt, Quang Ho, Othila Maia, Ian Lawson, Joe & Gladys Davila, Alan Knipp

JUDGES ASSISTANTS FOR July 2014: Laura Valli & Pete Dennis

SUPPER ROSTER FOR July 2014: Tony Costa & Maureen Higgins

RAFFLE PRIZES: Plants from Stock

MINUTES OF PREVIOUS MEETING (as published in the bulletin):

Moved: Marga Zanetich **Seconded:** Tony Costa **Carried:** Yes

TREASURER'S REPORT: Prepared and presented by Elaine Abrahams

Moved: Scott Sullivan **Seconded:** Maria Brutto **Carried:** Yes

CORRESPONDENCE IN:

1. Bulletins from affiliated Societies
2. Bank Statement
3. SCU Statement
4. Fairfield Council Hall Hire

CORRESPONDENCE OUT:

1. Bulletins to Members & affiliated Societies
2. Payment to Fairfield Council

Moved: Kim Mung **Seconded:** Les Horner **Carried:** Yes

GENERAL BUSINESS:

The president & Mario Attard turned up at the store to pack tables for the Koi show but nobody else turned up to help. Only 6 members were selling plants, so if members are not interested in helping it will be cancelled. The same stands for the Winter & Spring shows as well. You can not expect the same few people to do all the work for you.

We will meet at the hall at 4.30pm on Tuesday 22nd July 2014 to load tables etc. for the Winter show and start setting up in the Forum from 5.30pm.

RAFFLE RESULTS:

Maria Pusic, John Abrahams, Doug Cramp, Robert Bengé, Ampia & Stephen Ly.

MEMBERS NUMBER DRAW: No 48 Quoc Loung Ly Jackpot \$10 in July 2014

Meeting closed at 8.22p.m. by John Abrahams.



Note from Editor - If you do not have a badge, ask Maureen at the next meeting. Have your name written down the way YOU want it spelled. Bring your own plastic holder or buy one for \$1.

CHAMPION ONCIDINEA

Howeara Lava Burst L & I Friess

CHAMPION PAPHIOPEDILUM

Paph. villosum 'Barbara' W & B Lachmund

BENCHING RESULTS — June 2014

OPEN

Best Exhibit: Paph. villosum 'Barbara'

W & B Lachmund

CLASS 1 Standard Cymbidium

No entries

CLASS 2 Intermediate Cymbidium

1: (*Genus not stated*) Careless Heart - Cutie Pie L & I Friess

2: Perry Fou Pink Fou Foo (Entered correctly as *Cym.*) Arthur Smyrnios

CLASS 3 Miniature Cymbidium

1: (*Genus not stated*) Sarah Jean 'Ice Cascade' x Sarah Jean Vapour
Ampai Ruengkasab

2: *Cym.* Morialta Falls
Magda Kurtyka

CLASS 4 Cattleya – Exhibition

1: *Bc.* Dream Trader x *C.* walkeriana 'Alea' var. Margo -
Laura Valli

2: Cat.? Trianne x *schroderae* (Correctly entered as *C. trianae* x *schroderae*)
T & M Brutto

3: L.C. Drumbeat Triumph x B.e. Sugarleaf (Entered as
Lc. Drumbeat Triumph x *Bc.* Sugarloaf) Rosa Sessa

CLASS 5 Cattleya – Novelty

1: SC. Dalis choice Castle Bend (Entered correctly as
Sc. Dal's Choice 'Castle Bend') T Costa & S Crosby

2: *Blc.* - Momilani Rainbow Ampai Ruengkasab

3: Ct.? Walkeriana - Kenny (Entered as *C.* Snow Blind) T Costa & S Crosby

CLASS 6 Cattleya – Cluster

1: L.C. Scarlet Imp x Ctna, Capri (Entered correctly as *Lc.*) Laura Valli

2: *Blc.* Waianiae Leopard 'Ching Hua' x *Slc.* Jungle Treasure
(Entered as *Blc.* Waianiae Leopard 'Ching Hua' HCC/AOS X *Slc.* Jungle
Treasure 'Mojave' HCC/AOS Ampai Ruengkasab

3: *Epicat*? Unknown T Costa & S Crosby

CLASS 7 Cattleya – Miniature

1: *C.* Kauai 'Star Bright' Marga Zanetich

2: *Hknsa.* Dal's Strike 'Castle Creek' T Costa & S Crosby

3: *Sc.* Dal's Good One 'Janelle' Arthur Smyrnios

CLASS 8 Cattleya – Intergeneric

No entries

CLASS 9 Paphiopedilum Species

1: *P.* villosum 'Barbara' (Entered correctly as *Paph.*) W & B Lachmund

2: *P.* insigne (Entered correctly as *Paph.*) Q L Ly & T H Luong

3: *P.* insigne 'Harefield Hall' (Entered correctly as *Paph.*) - T & M Brutto

CLASS 10 Paphiopedilum – Hybrid

1: *P.* Neeri Gold 'Tinonee' (Entered correctly as *Paph.*) Q L Ly & T H Luong

2: *P.* insigne x villosum (Entered correctly as *Paph.*) Maria Pusic

3: *P.* nitens (Entered correctly as *Paph.*) Laura Valli

CLASS 11 Paphiopedilum – Complex Hybrid

1: *P.* unknown Dragon Fly (Entered as *Paph.* Dragon Flag)
Ampai Ruengkasab

2: *P.* Mario Palmeri (Entered correctly as *Paph.* Mario Palmieri)
T Costa & S Crosby

3: *P.* Wakeswood 'Africa' (Entered correctly as *Paph.*) T & M Brutto

CLASS 12 Oncidium Hybrid.

1: *Onc.* Heart of Gold x Elsie Miles Marga Zanetich

2: *Onc.* Sum Lai Woh unknown

3: *Onc.* Sharry Baby 'Perfume Princess' T Costa & S Crosby

CLASS 13 Oncidinae Intergeneric Hybrid - up to 65 mm

1: *Howeara* Lava Burst L & I Friess

2: WLSNA Kolibri 'Florafest' (Entered correctly as *Wilsonara*)
Laura Valli

3: *Odc.* Cherry Fudge 'Carmela' Maria Pusic

CLASS 13a Oncidinae Intergeneric Hybrid - over 65 mm

1: *Oda.* Tropical Heatwave (Entered as *Odontonia*) Maria Pusic

2: *Colm.* Wildcat 'Carmela' T Costa & S Crosby

3: *Odc.* Anna Claire (Probably *Odc.* or *Odontocidium*) - Arthur Smyrnios

CLASS 14 Australian Native Species (excluding terrestrials) No entries

CLASS 14a Australian Native Terrestrial (species & hybrids)

1: *Crbs.* aconitiflorus John English

2: *Pst.* nutans John English

3: *Pst.* grandiflora John English

CLASS 15 Australian Native Hybrid (excluding terrestrials)

1: *Den.* Jonathon's Glory 'Dark Joy' Magda Kurtyka

2: *Den.* Annes Rainbow x Andrew Pearson T Costa & S Crosby

3: *Den.* Hilda Poxon T Costa & S Crosby

CLASS 16 Dendrobium Softcane

1: *Den.* originale x *Den.* monillifera W & B Lachmund

CLASS 17 Dendrobium Hardcane Hybrid

1: *Den.* Superbien ? T & M Brutto

2: *Den.* H Emma White x *Den.* Chao Praya Gem D Carvey

3: *Den.* Emma White x Chao Praya Crem D Carvey

CLASS 18 Standard Species from the Americas

1: *B.* cordata Ed.'s suggestion - *Brs.* caudata Kim Mung

2: Unknown Arthur Smyrnios

3: *Onc.* ornichorhyreum (Entered correctly as *Onc.* ornithorhynchum)
Kim Mung

CLASS 19 Standard Species other than the Americas No entries

CLASS 20 Miniature Species

1: *Dendrochilum* saccolabium Q L Ly & T H Luong

2: *Arpophyllum* corderale Kim Mung

CLASS 21 Vandaceous

1: *Arach.* Chorchalood x *Rhy.* Chorchalood Kim Mung

2: *Sartyris* Blue Knob (Entered correctly as *Sartyris* Blue Knob)
T & M Brutto

3: *V.* tricolor T & M Brutto

CLASS 22 Phalaenopsis - Classic

1: *Phal.* Love My Lady D Carvey

CLASS 23 Phalaenopsis - Novelty

1: *Phal.* unknown Rosa Sessa

CLASS 24 Miscellaneous

1: *Lyc.* Aquila 'Détente' T Costa & S Crosby

2: *Phrag.* caludutum (Ed.'s suggestion *Phrag.* caudatum) T Costa & S Crosby

3: *Masd.* Magic Dragon x Pichincha 'Pastel Stripes' T Costa & S Crosby

CLASS 25 Seedling – Any Genus

1: *Cym.* My Sweet 'Amy' W & B Lachmund

2: *Paph.* Hsinying Web x Maudie 'Tetra on Tretra' T Costa & S Crosby

3: *Cym.* Sue x Via del Playa 'Valerie' W & B Lachmund

CLASS 26 Fern & Foliage

1: Treasure fern Rosa Sessa

2: *Neo.* Riens (Entered correctly as *Neo.* Riens Pride) Rosa Sessa

3: *Neo.* Red on Green x *pauciflora* Rosa Sessa

CLASS 27 Floral Art No entries

NOVICE

Best Exhibit: *Laelia anceps*

CLASS 28 Standard Cymbidium

1: *Cym.* unknown

CLASS 29 Intermediate Cymbidium

1: *Cym. tracyanum*

2: *Cym.* unknown

CLASS 30 Miniature Cymbidium

1: *Cym.* Ice on Fire 'Nikkietta'

CLASS 31 Cattleya – 90mm and over

CLASS 32 Catleya – under 90mm

CLASS 33 Paphiopedilum

1: *Paph. insigne vilwin ?*

CLASS 34 Dendrobium

CLASS 35 Australian Native

CLASS 36 Species

1: *L. anceps*

CLASS 37 Miscellaneous

1: Unknown (Entered as *Onc.* unknown)

2: *Onc.* Sharry Baby - Sweet Fragrance

3: *Onc. hastilabium*

Savann Marm

Doug Cramp

Sarim Chey

Doug Cramp

Robert & Leonie Bengé

No entries

No entries

Mila Terkes

No entries

No entries

Savann Marm

Robert & Leonie Bengé

Sarim Chey

Sarim Chey

Disclaimer - Editor has been instructed to print results as recorded on result sheet, INCLUDING ALL ERRORS.

Please make certain that all tags on your plants have the correct spelling and use REGISTERED names.

Below are some abbreviations which are still causing problems.

C. = *Cattleya*

Odn. = *Odontonia*

Paph. = *Paphiopedilum*

Wils. = *Wilsonara*

Full lists have been printed and made available for viewing:

- In our Competition Show Box
- In our Library
- From Maureen (Beginner's Class)

A.pdf may be downloaded from the Australian Orchid Council site, so you may print your own or use it as a quick reference on your computer.

- Type orchidsaustralia.com.au into your internet browser
- Go to the Australian Orchid Council Tab
- Click on 'Downloads' from the drop down list
- Choose RHS abbreviations (11 pages)
- You may also like RHS registered genera names (78 pages)

ORCHID NAMES

1. Genus

There are about 600 genera (plural of genus) in the orchid family. Some genera are *Cymbidium* or *Cym.* and *Cattleya* or *C.* Note that the first letter is Capitalised and the whole word is written in *Italics*

2. Species OR Grex

There are about 30,000 natural species in the orchid family The *species* name is written in all small letters, in *italics* When an orchid is a man-made hybrid, the second part of the name is referred to as the **Grex** name. The **Grex** name starts with a Capital Letter

3. Cultivar or Clonal

Cultivar (or clonal) names are only given to orchids that are superior. Therefore not all orchid names have cultivar name. Cultivar names should be registered. If an orchid is propagated by division, mericlone or selfing, then it gets the same cultivar name because it has the same DNA as the original plant.

The cultivar name is always in single quotes and starts with a Capital Letter

4. Awards

If a plant has won an award, the final part of its name will be in CAPITAL LETTERS

Examples

GENUS	SPECIES OR GREX	CULTIVAR.	AWARDS
<i>Paph.</i>	<i>villosum</i>	'Barbara'	ACM-HCC/AOC
<i>Slc.</i>	Jungle Treasure	'Mojave'	HCC/AOS

Not all orchids have 4 names. some only have Genus and Species or Grex
Cym. tracyanum
Den. Hilda Poxon

STOLEN ORCHIDS

Letter from Boolaroo Orchid Society's member, Phillip Adams)

Someone broke into my orchid house and stole about a hundred plants. (I was wondering whether you could put out a note, to members on the off chance someone might see them and recognise them. They could turn up at a market or anywhere else. Here is a list of items just in case any turn up.

The most recognisable items will be:-

- 1. Large specimen plant of Paph. Insigne with 14 flowers. It is in a 14 inch squat port pot, potted in a rock wool mix with shell grit on top. Flowers just about finished.*
- 2. Large specimen Paph. Invincible also in a 14 inch port pot with 10 flowers all facing the same way and the first starting to open.*
- 3. Paph. Aylesbury "Lou Sasso" potted in a rockwool mix with shell grit on top in an 8 inch port pot. Two buds.*
- 4. About 20 Miltonopsis plants all in rock wool with pink gravel on top and in 4 inch port pots. One plant Elizabeth Castle had two spikes one with 4 and one with 5 flowers just starting to unfurl. One flower was broken off when removing the plant and found on the floor. Other names include Hudson Bay "Judith", Meadowdale X Todd Dirks, Lycaena Stamperland, Jean Carlson "Pink Parfait", Jean Carlson "Fantasy", Arthur Cobbledick and Lycaena Stamperland X Arnold Linsman, etc.*
- 5. About 60 Odontoglossums in 4 inch and 5 inch port pots and all potted in rock wool with pink gravel on top.*

6. One miniature cymbidium in rockwool in a tall 6 inch pot. This pot was then placed in an 8 inch pot and gravel was put between the pots to make it stable. They took the 8 inch pot with gravel and the smaller pot inside.

7. One hard cane Den. in bark with about eight stems all approximately 12 inches long and with 4,5 or 6 leaves on top of each stem. This plant was unnamed.

8. A large specimen Miltonia hybrid in a 14 inch plastic "terracotta" saucer. The saucer had many holes drilled in it for drainage.

A recognisable feature of my plants is that they all have TWO labels in each of them. One will have the name and the other will be coloured. Dark green, blue, red, purple or light green depending on the year the plant was last potted. It will carry a date only. EG. 5/12 for May, 2012.

phillip.adams@usa.net



MAP and PARKING INSTRUCTIONS - FAIRFIELD FORUM

PARKING - Forum Parking now has boom gates so you will not forget to get a ticket, but the *'for profit'* Parking operators now enforce a **2 hour limit** If staying longer than 2 hours, you need to take your ticket to the Forum Office, pay \$4.00 and have it endorsed for Staff Parking EACH DAY

THE ROSTER- A way of sharing the workload at our show. Without a roster, 20 members may be hanging around one morning and none that same afternoon. No members to prevent plant theft and price tag swapping. No members to give the few who turn up every day a break.

