



# FAIRFIELD DISTRICT ORCHID SOCIETY INC

FOUNDED IN 1964 AS THE LIDCOMBE HOSPITAL ORCHID SOCIETY

November  
ISSUE: 11  
2012

## MONTHLY NEWS LETTER



**MEETING: 7.30 pm  
2ND WEDNESDAY  
OF THE MONTH.**  
Senior Citizens Hall  
29 Villawood Rd,  
VILLAWOOD.

**P.O. BOX 40  
SMITHFIELD WEST  
2164**

### OFFICE BEARERS

**PRESIDENT**  
John Abrahams  
9726-5397

**VICE PRESIDENT**  
Mario Attard  
9610-8113  
marioattard@optusnet.com.au

**SECRETARY / TREASURER**  
Elaine Abrahams  
9726-5397

### COMMITTEE MEMBERS

Don Roberts 97715474  
Russell Woods  
Tony Brutto  
Maria Brutto  
Stephen Ly  
John English

### OTHER CONTACTS

**EDITOR**  
Maureen Johns  
97241067 or 0409299980  
orchidsec@gmail.com

**WEBMASTER**  
Stephen Ly  
admin@fdos.com.au  
Website, fdos.com.au

## OUR NEXT MEETING

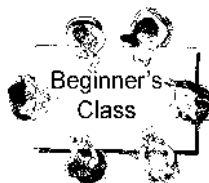
### 12th December

## Popular Choice Competition

One specimen orchid may be entered.  
(Novelty Prize only)

## End of Year Breakup Party

- ★ Come early (from 4pm) to set up the hall.
- ★ Store will be open for one hour only  
(time to be announced)
- ★ Party from 7pm (after arrival of guests)  
Society will provide and soft drinks, but  
bring a plate or your speciality to share.
- ★ Monster Raffle. (Buckets and  
Buckets of prizes)  
Donations of non perishable  
items accepted



No Beginner's Class this month

**WE PRIDE OURSELVES ON BEING THE FRIENDLY SOCIETY**

Fairfield District Orchid Society Inc. disclaims all responsibility for any loss or damage  
which may be attributed to the use or misuse of any materials mentioned or any advice given in this news letter.

# CHAMPIONSHIP NIGHTS

DECEMBER:  
CHRISTMAS PARTY &  
Popular Choice Vote

---

## Sunday Markets

Your chance to sell, every month,  
**EXCEPT DECEMBER**>

New!

Last Sunday of the month markets inside **Stockland Mall**, 561-583 Polding St, Wetherill Park. We will only be selling Orchids in bloom. Plants to be delivered to the stall by 9.30am on the day, we will be setting up from 8.30am. We plan to sell most items in our store marked up for the public. Members who help for 3 or more hours will only be charged 15% on their plant sales. We will not be attending the Market Day in December.

---

## Invitation Events

Maureen would appreciate it if arrangements could be made to **correct or forward** any information about coming events.

Email to [orchidsec@gmail.com](mailto:orchidsec@gmail.com) or phone 97241067

---



## GRADUATING TO OPEN

**Russell Woods**

**Hermine Wagner**

**Jeanette Chapman**

**will be going up into Open in 2013**

HAVE A LOOK  
AT OUR  
WEBSITE

[fdos.com.au](http://fdos.com.au)

Developed and maintained  
by member,  
**Stephen Ly**



*Beath*  
"REMEMBER, PAY ATTENTION IN SCHOOL SO YOU CAN  
TEACH US HOW TO USE THE COMPUTER!"  
"THEN WE CAN ALL LOOK AT OUR WEBSITE"

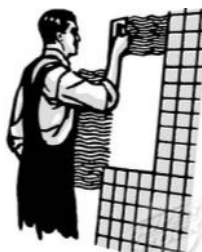
Would you like to receive this newsletter as  
a .pdf file at your email address.

Contact Maureen at:

**[orchidsec@gmail.com](mailto:orchidsec@gmail.com)**

Let me know if you want email **ONLY** or  
email plus posted version.

## WALL & FLOOR TILING



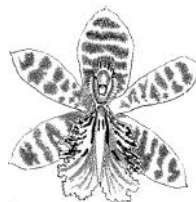
*Bathrooms*

*Kitchens*

*Pensioners Welcome*

**25 YEARS IN THE BUSINESS**

**Van Be Tran 0408643619**



Advertising spaces  
available. Your own  
artwork or ours!

*For only \$20 per year. Contact Editor  
to help subsidise our colour pages*

Note from Editor -A badge is required to claim the Lucky Number Draw Prize or to buy from our Store. If you do not have a badge, ask Maureen at the next meeting. Have your name written down the way YOU want it spelled. Bring your own plastic holder or buy one for \$1.

## MINUTES GENERAL MEETING HELD 14<sup>th</sup> November 2012

President, John Abrahams, opened the meeting at 7.35 pm, at the Villawood Senior Citizens Hall.

**VISITORS:** Paul Bester (Neutrog), Travis Milton & Thi Ngoc Hung Nuynh

**NEW MEMBERS:** Hoa & Anna Wong, Pete Dennis, Les Horner

**APOLOGIES:** Barbara Lachmund, Marga Zanetich, Alan McFarlane, Jean Fazckas Kirsty Knight, Tony & Maria Brutto.

**JUDGES ASSISTANTS FOR January 2013:** Edwina Roe & Dale Brown

**SUPPER ROSTER FOR January 2013:** Russell Wood & Gladys Davila

**RAFFLE PRIZES:** Plants from Stock & Light Key ring

**MINUTES OF PREVIOUS MEETING (as published in the bulletin):**

**Moved:** Ian Lawson                      **Seconded:** Greg Knight                      **Carried:** Yes

**TREASURER'S REPORT:** Prepared and presented by Elaine Abrahams

**Moved:** Laura Valli                      **Seconded:** Sandra Crosby                      **Carried:** Yes

### CORRESPONDENCE IN:

1. Bulletins from affiliated Societies
2. Bank Statement
3. SCU Statement
4. Neutrog Feedback
5. Xmas Party Invitations from other societies

### CORRESPONDENCE OUT:

1. Bulletins to Members & affiliated Societies
2. Christmas Party Invitations to judges

**Moved:** Scott Sullivan                      **Seconded:** Kim Mung                      **Carried:** Yes

### GENERAL BUSINESS:

Last Sunday of the month markets at Stockland we will only be selling Orchids in bloom. Plants to be delivered to the stall by 9.30am on the day, we will be setting up from 8.30am. We plan to sell most items in our store marked up for the public. Members who help for 3 or more hours will only be charged 15% on their plant sales. We will not be attending the Market Day in December. Our next stall will be the last for the year.

Don't forget our raffle at our end of year break up party. Please make sure that they are well within the use by date and NOT out of date. We will be setting up from 4pm, and ask everyone to bring a plate of food. Also we will be having a members choice table so everyone can bring along 1 plant only.

President John Abrahams thanked Paul Bester from Neutrog for his power point presentation & talk as to how Neutrog are expanding and bring out new products. He also thanked him for the samples he gave out to members who were present.

**RAFFLE RESULTS:** Scott Sullivan, Rosa Sessa, Ian Lawson, Sonia Cosgrove, Gladys Davila, Wal Lachmund, Scott Sullivan, Russell Woods & Doug Cramp.

**MEMBERS NUMBER DRAW:** No: 65 Sita Bishaw was not present.                      Jackpot \$20 in January

Growing Comp Results:	1 <sup>st</sup> 18	2 <sup>nd</sup> 37	3 <sup>rd</sup> 31
	Hermine Wagner	John Abrahams	Scott Sullivan

Dear members, the committee has made a decision that the end of point score money will be handed out during our January & February meetings only.

Meeting closed at 8.45 p.m. by John Abrahams.

# CHAMPION SARCOCHILUS

Sarco. Yalwal - Ian Lawson

# CHAMPION CATTLEYA

Lc. Irene Finney X C. Cherry Chip - Tony & Sandra

## BENCHING RESULTS — November 2012

### OPEN

**Best Exhibit: *Cym. canaliculatum* Neal Chiddy**

#### CLASS 1 Standard Cymbidium

1: *Cym.* unknown

J & G Davila

#### CLASS 2 Intermediate Cymbidium

No Entries

#### CLASS 3 Miniature Cymbidium

1: *Cym.* Cricket

Tony & Sandra

2: *Cym.* Cricket

Quoc Luong Ly

3: *Cym.* Cricket

Laura Valli

#### CLASS 4 Cattleya – Exhibition

1: Lc. Irene Finney X C. Cherry Chip

Tony & Sandra

= C. Mari's Song

2: *Blc.* Beautiful Morning

Kim Mung

3: C. Irene Holguin 'Featherhill'

Elaine Abrahams

#### CLASS 5 Cattleya – Novelty

1: *Pot.* Roy's Magic 'Janet'

Diana Carvey

2: *Slc.* unknown

John English?

(Number is on the result sheet but plant is not on your entry sheet. Wrong person?)

#### CLASS 6 Cattleya – Cluster

1: L. Pink Jewel

Kim Mung

2: L. Fiery X C. Coronet X Rojo

Laura Valli

3: C. Paloma X Trick or Treat

Laura Valli

#### CLASS 7 Cattleya – Miniature

1: *Slc.* Jewellers Gem

Laura Valli

#### CLASS 8 Cattleya – Intergeneric

1: *Colm.* Varut Crystal Butterfly

Laura Valli

#### CLASS 9 Paphiopedilum Species

1: *Paph.* *hirsutissimum*

Tony & Sandra

#### CLASS 10 Paphiopedilum – Hybrid

1: *Paph.* *hennisianum* x *Houdini*

Kim Mung

2: *Paph.* Luther Slaughter X Red Shift

Tony & Sandra

= *Paph.* Red Luther

3: *Paph.* (Jolly Roger X Pacific Magic) X Butler's Effect

Tony & Sandra

#### CLASS 11 Paphiopedilum – Complex Hybrid No Entries

Many members entered plants which were eligible for Class11, (Paphiopedilum - Complex Hybrid) in Class 10 (Paphiopedilum Hybrid) A missed opportunity for 1st 2nd and 3rd this month in Pap. Complex Hybrid, which had NO ENTRIES AT ALL. Editor

#### CLASS 12 Oncidium

1: *Odcdm.* Dark Charmer

Tony & Sandra

2: *Onc.* Splinter

Elaine Abrahams

3: *Onc.* (Crispin ? X *marshallianum*) X Hartwill 'Speciality ? Otilia Maia

#### CLASS 14 Australian Native Species (excluding terrestrials)

1: *Cym.* *canaliculatum*

Neal Chiddy

2: *Cym.* *canaliculatum* var. *Sparksii*

John English

3: *Sarco.* *falcatus*

Don Roberts

#### CLASS 14a Australian Native Terrestrial (species & hybrids)

1: *Phaius* *tankervillei*

Rosa Sessa

2: *Ptst.* *falcata*

John English

#### CLASS 15 Australian Native Hybrid (excluding terrestrials)

1: *Sarco.* Burgundy On Ice

Allan Kneipp

2: *Sarco.* Dove 'Bloody Bettler'

Don Roberts

3: *Sarco.* Riverdene X *Plrhz.* *tridentata*

Don Roberts

= X *Plectochilus* Delta

#### CLASS 16 Dendrobium Softcane

1: *Den.* Oriental Royal ? X Beautiful Egg

Kim Mung

2: *Den.* Kyle Barp ? / Bard ?

Diana Carvey

could be *Den.* Kylee Urata

3: *Den.* Golden Blossom 'Lemon Heart'

J Kosaras

#### CLASS 17 Dendrobium Hardcane Hybrid

1: *Den.* Impact

Kim Mung

2: *Den.* Post Printing

Tony & Sandra

3: *Den.* *Memoria* Kip McKillop X Mighty Mite

Kim Mung

#### CLASS 18 Standard Species from the Americas

1: *Brassavola* *pirrinii*

Tony & Sandra

2: C. *skinneri* var. *alba* 'Jill'

Laura Valli

3: C. *intermedia* var. *suavissima*

Laura Valli

#### CLASS 19 Standard Species other than the Americas

1: *Den.* *loddigesii*

J Kosaras

2: *Ansellia* *africana*

Not on Tony & Sandra's sheet

3: *Den.* *densiflorum*

John English

#### CLASS 20 Miniature Species

1: *Dendrochilum* *tenellum*

Not on Tony & Sandra's sheet

#### CLASS 21 Vandaceous

1: *Asco.* *Finetia* Cherry Blossom

Stephen Ly ?

(No entry form)

#### CLASS 22 Phalaenopsis - Classic

1: *Phal.* Maerland Gary Smith' X Dtps Taisuco Nobel

Tony & Sandra

2: *Diploprora* *championii* X V. *cristata*

Tony & Sandra

3: *Ascda.* Kultana Gold Spot X Kultana 4N

Kim Mung

#### CLASS 23 Phalaenopsis - Novelty

1: *Phal.* Sunrise Pecker ? / Pecker ?

Diana Carvey

2: *Phal.* Hsin Mirage

J Kosaras

#### CLASS 24 Miscellaneous

1: *Brs.* Eternal Wind 'Summer Dream'

W & B Lachmund

2: *Epi.* Topaz Glory

Laura Valli

3: *Masd.* Hot Shot 'Cool Dude'

Tony & Sandra

#### CLASS 25 Seedling – Any Genus

1: *Sarco.* Yalwal X ?

Ian Lawson

2: *Sarco.* Judith 'Yvonne' X *Sarco.* Peace 'Mulberry

Ian Lawson

3: *Beallara* Diana Dunn X ?

Laura Valli

#### CLASS 26 Fern & Foliage

1: *Neoregelia* Shell Dance

Rosa Sessa

2: Treasure Fern

Rosa Sessa

#### CLASS 27 Floral Art

1: Floral Art

Rosa Sessa

### NOVICE

**Best Exhibit: *Pot.* burana Anger 'Hysing'**

**Xuan Quang Ho**

CLASS 28 Standard Cymbidium

No Entries

**CLASS 29 Intermediate Cymbidium**  
**CLASS 30 Miniature Cymbidium**  
**CLASS 31 Cattleya – 90mm and over**

1: *C. intermedia* var. *alba*  
 2: *C. mossiae*

**CLASS 32 Cattleya – under 90mm**

1: Pot. Burana Angel 'Hsyng'  
 2: Ctna. Dal's Capri 'Gift' X Bc. Dal's Charm Ebony'  
 3: Hksna. Sogo Doll 'Little Angel'

**CLASS 33 Paphiopedilum**

1: *Paph.* Michal Stewart X Divisadero 'Pure Gold'

No Entries  
 No Entries

Ampai Ruengkasab  
 Xuan Quang Ho

Xuan Quang Ho  
 Maria Pusic

Ampai Ruengkasab

Xuan Quang Ho

**CLASS 34 Dendrobium**

**CLASS 35 Australian Native**

1: *Sarco.* Heidi 'DW' X Red Chocolate  
 2: *Sarco hartmanii* var. *alba* 'Silo'

**CLASS 36 Species**

1: *Den. crysotoxum*  
 2: *Den. nobile*

**CLASS 37 Miscellaneous**

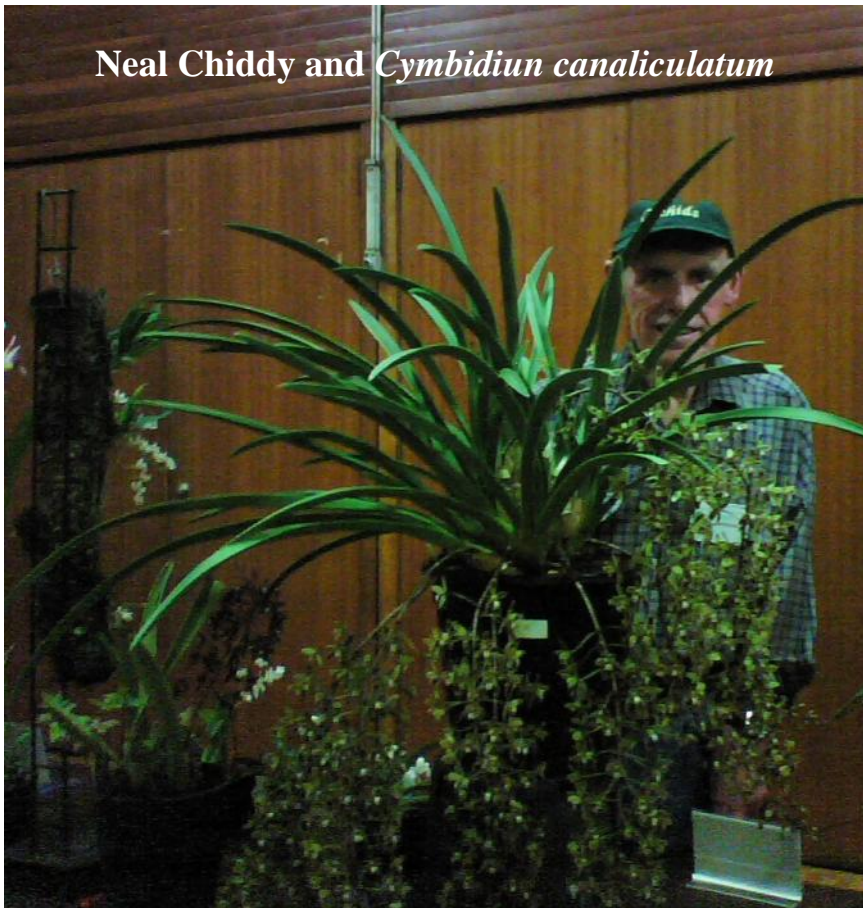
1: *Phal.* Blandam's Kalidoscope

No Entries

Edwina Rowe  
 Edwina Rowe

Laurie Higgins  
 Doug Cramp

Ampai Ruengkasab



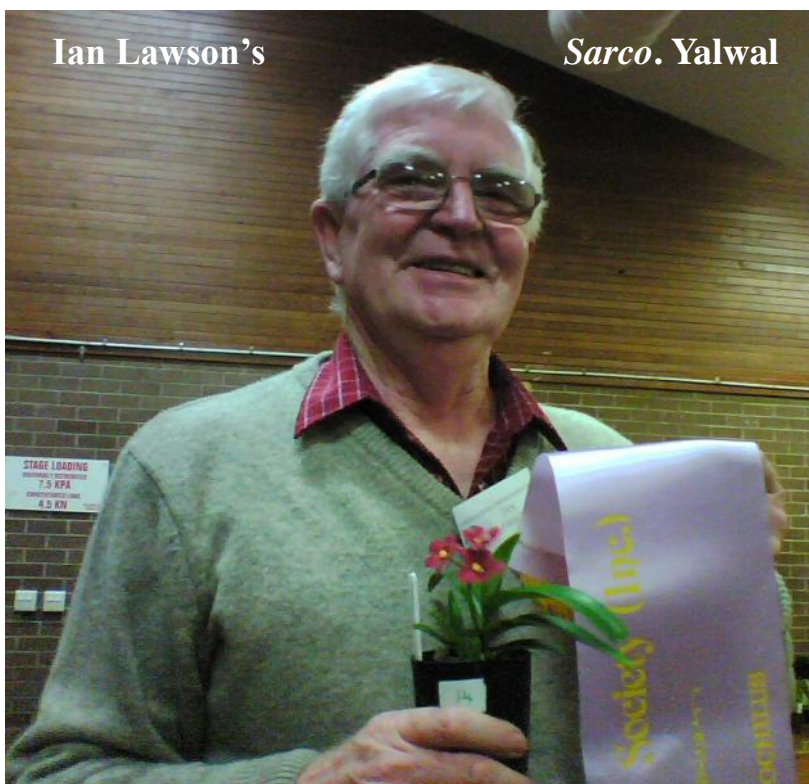
Neal Chiddy and *Cymbidium canaliculatum*

Thanks to Nick Koutsoukis for checking plant names on his database .  
*In cases where the Entrant's sheet and result sheet / Name tag are different and there is no obviously correct name, the editor has used both versions, separated by a slash eg. Den. Kyle Barp ? / Bard ?*  
**Some plants also had the wrong entrant number**  
 (See Class 5, and class 21 where somebody has perhaps missed out on points by doing so.)



**SOCIETY ORCHID SUPPLIES**

**DON'T FORGET TO VISIT THE STORE ON MEETING NIGHTS. THE STORE CONTAINS A VARIETY OF PRODUCTS AT A SAVING ON NORMAL RETAIL RATES. INCLUDED ARE ITEMS OF PINE BARK, CYMBIDIUM MIX, LABELS, PENS, STAKES, FERTILIZERS, TRAYS, PLASTIC HANGERS AND LOTS MORE. THE STORE MAY HAVE SOMETHING OF INTEREST TO YOU, SO TAKE A LITTLE TIME TO HAVE A LOOK AT THE STOCK AND SAVE**



Ian Lawson's

*Sarco. Yalwal*



**Handy Man**

*John Abrahams*

**HANDY MAN**

52 Buckingham Street  
 Canley Heights  
 N S W 2166  
 Ph: 0425 243 742

For all home and commercial repairs and maintenance including yard work

*New LOOK*

SCREENS AND DOORS



Angela 0407 072 631  
 John 0404 838 389

Tel: (02) 9605 4314  
 Fax: (02) 9605 9367

2/24 Memorial Ave  
 Ingleburn NSW 2565  
[newlookscreens@optusnet.com.au](mailto:newlookscreens@optusnet.com.au)

• Screens • Safety Doors • Roller Blinds • Vertical Blinds  
 • Venetian Blinds • Timber & timber style blinds & lots more  
 \* Free measure and Quote \*